

SPECIFICATIONS



Digi 1



Digi Plus

OBSERVATION TUBE	Monocular, 45° inclined, 360° rotatable	Binocular, 45° inclined, 360° rotatable, IPD 52-74 mm
EYEPIECE	WF 10x / 18mm	Focusable WF 10x / 18mm
OBJECTIVES	LP series Semi Plan 4x, 10x, 40x (SL), 100x (SL, Oil)	RP series Semi Plan 4x, 10x, 40x (SL), 100x (SL, Oil)
ILLUMINATION	12V 20W Halogen Lamp	12V 20W Halogen Lamp
IMAGE DEVICE	1.3 Megapixel Color CMOS sensor	1/3" Color CCD Image Sensor NTSC / PAL Output
RESOLUTION	1280 (H) x 960 (V) pixels	720 x 576 pixels (PAL), 720 x 480 pixels (NTSC)
LIGHT SENSITIVITY	1 Lux	≥ 0.8 Lux F1.2 5600°K
INTERFACE	USB ver 2.0	USB ver 2.0, Composite video
SOFTWARE	Digi Pro™ 4.0 Image Analysis Software	Digi Pro™ 4.0 Image Analysis Software
SYSTEM REQUIREMENTS	CPU: Pentium II or Higher, RAM : 64MB or more, Hard Disk Space : 100Mb or more, Windows® 98 SE/ME/2000/XP, CD-ROM drive and USB 2.0 port	



Contact us:

WWW.OEM-OPTICAL.COM

WWW.OEM-OPTICAL.NET

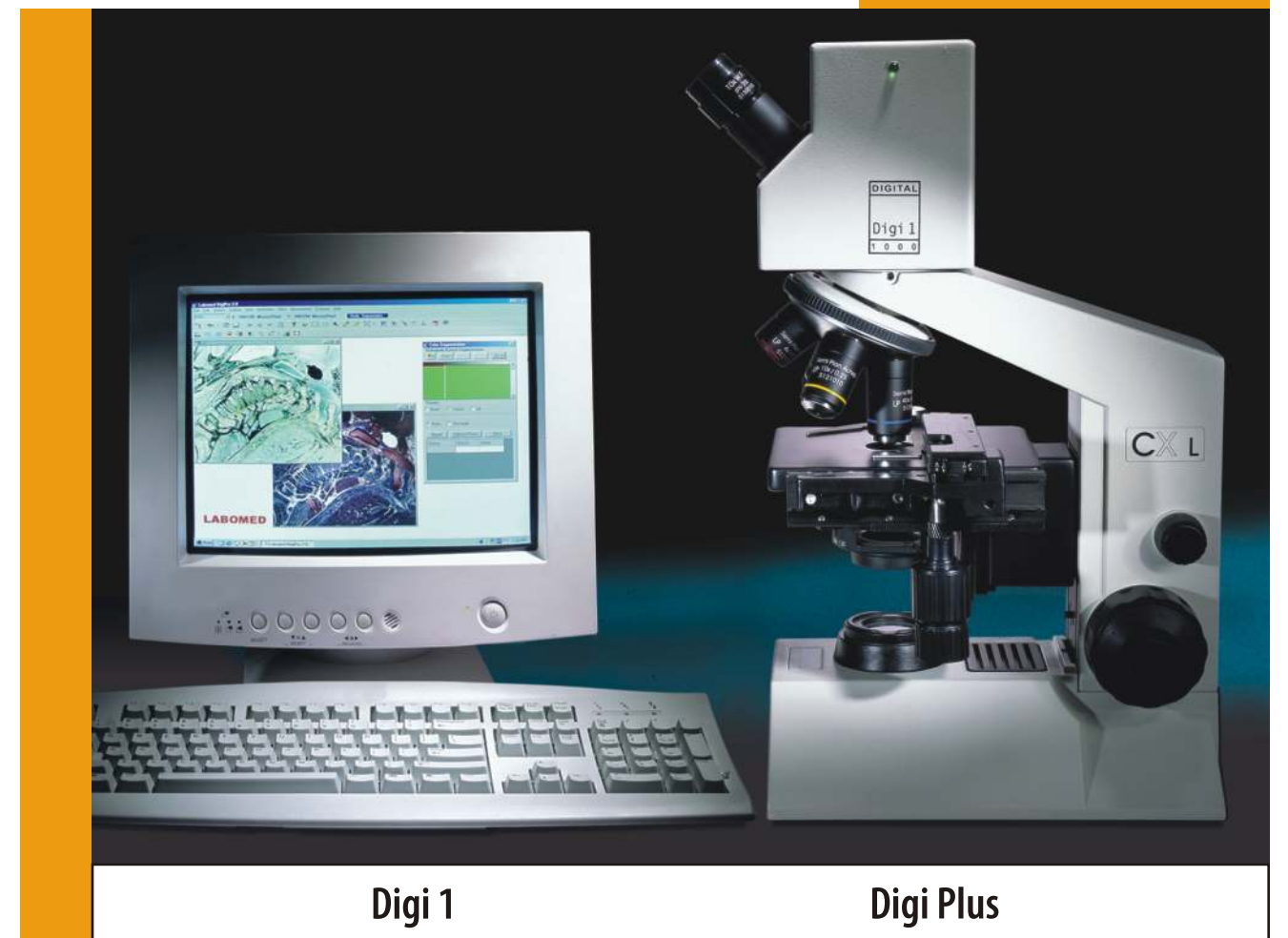


ISO 9001 : 2000
File No. A9020



DIGITAL

Laboratory Microscopy Solutions



Digi 1

Digi Plus

LABOMED

Ideas for Vision.

LABOMED

WORKSTATION FOR DIGITAL MICROSCOPY

LABOMED digital workstations provide a superior yet cost effective solution for computer interactive Laboratory and Clinical environments.

Equipped with the highest resolution cameras in this class of product and DigiPro™ software, these microscopes provide an imaging solution that is easy to learn and user friendly.

DigiPro™, the imaging software provides versatile image manipulation tools for capturing and storing digital images directly on the computer for future studies. Besides providing basic image capture, enhancement and measurement utilities, DigiPro™ is equipped with a host of special features to provide a full spectrum of image processing capabilities.

This unique combination of digital microscope and software provides wider tools for a multitude of applications.

Highlights of DigiPro™

- Still, Video, Time lapse still image and Time lapse video capturing
- Wide selection of image enhancement and annotation tools
- Special filters for image manipulation
- Multiple image amalgamation and Mosaic tools
- Linear, angular and curvi-linear measurement functions
- Customized reports and report template designer



Image Capturing

- Various modes of capturing
- Binder file format, save in JPG, GIF, LMD and BMP
- Brightness/Contrast, Hue/Saturation adjustment on the live image
- Live video/image capturing in AVI format
- Add voice/sound to video files for future reference

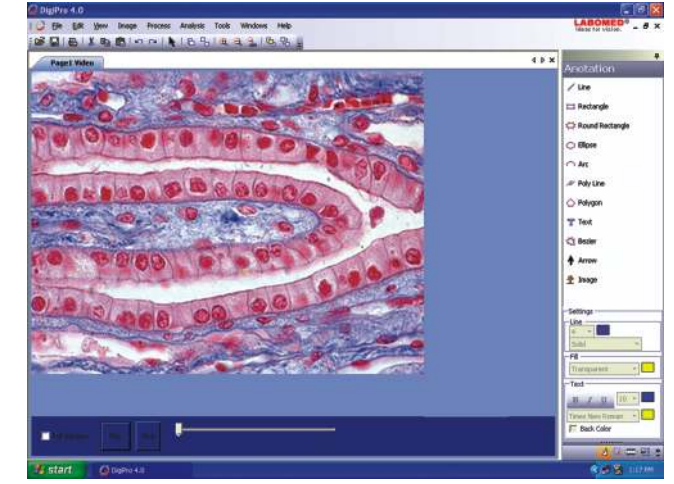
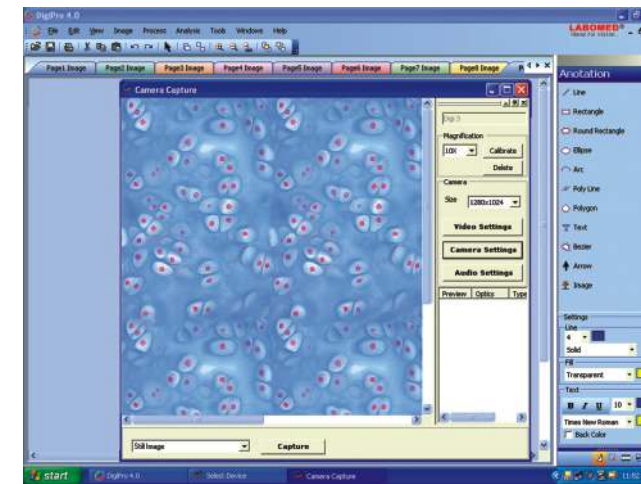


Image Processing

- RGB, Brightness/Contrast and White Balance
- Filters : Darkfield, Emboss, Engrave, Soften, Sharpen, Invert and user defined filters
- Merge multiple images into one for enhanced view
- Stitch multiple images of a slide to form digital slide
- Image sharing through e-mail and online video sharing on internet for tele-medicine

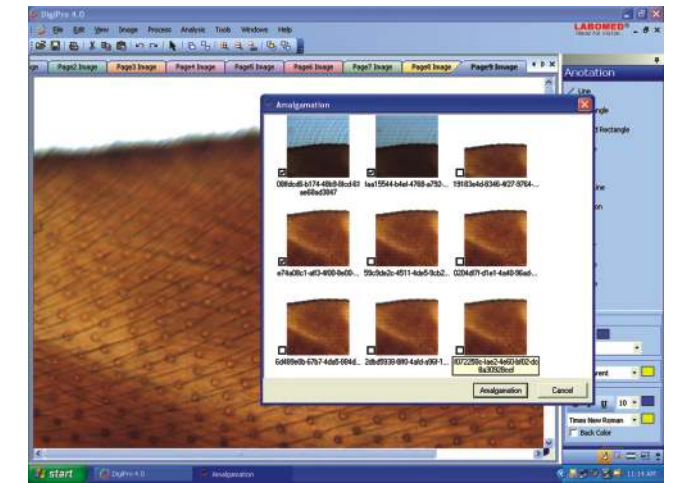
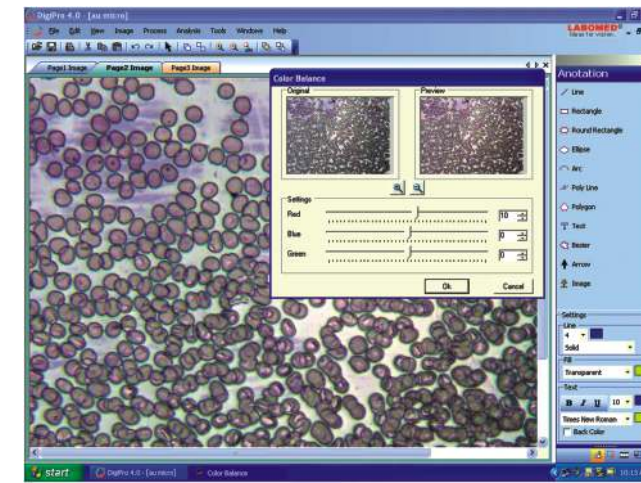
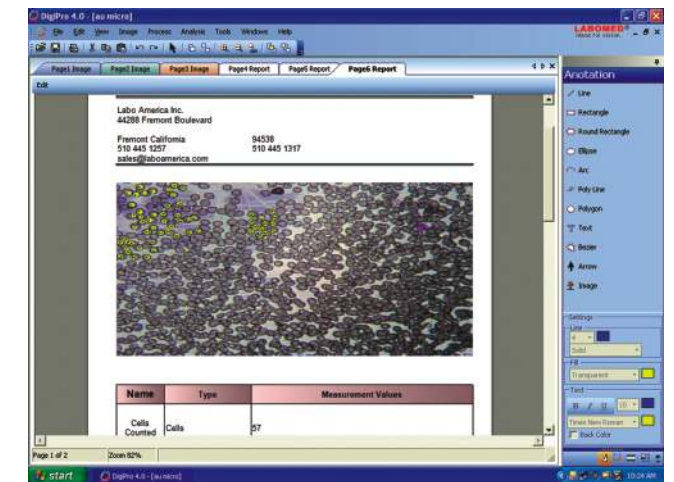
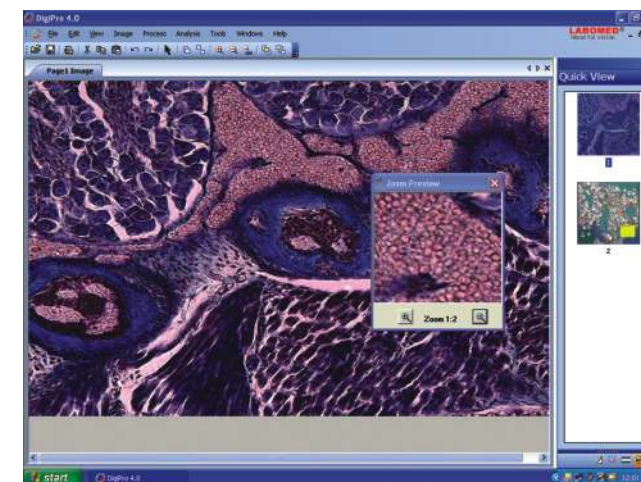


Image Measurement

- Precise Measurement of various shapes
- Annotation tools for highlighting and writing comments
- Camera Lucida for sketching cell structures
- Easy result marking and printing
- Easy report writing and customized reports by built-in report designer
- Industry specific analysis tools



DigiPro™ Software for Digital Microscopy